

## Wycombe Premier Meet 2019

### Address

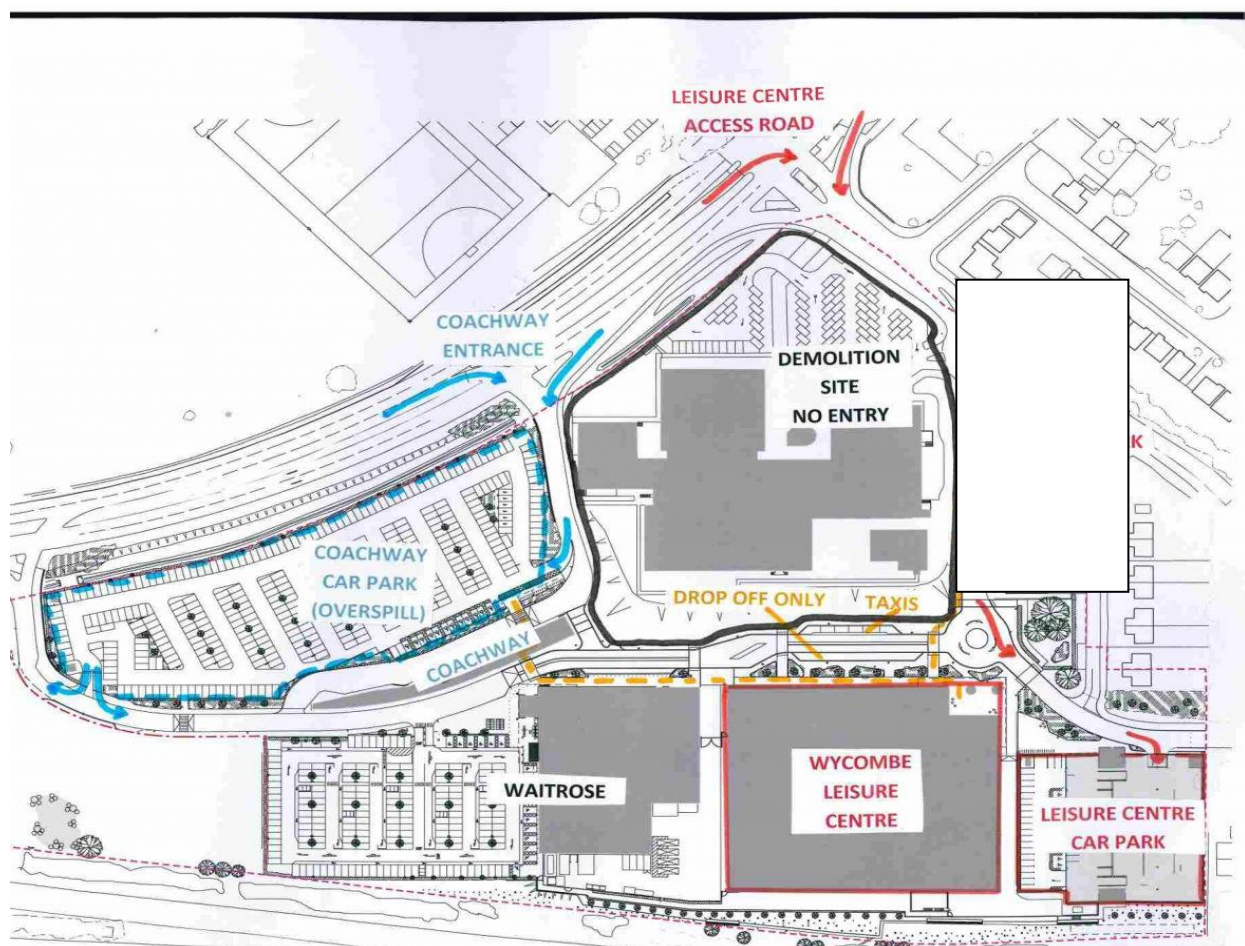
Handy Cross  
High Wycombe  
Buckinghamshire  
HP11 1UP

### Parking

Car Parking at the new Wycombe Leisure Centre is limited, but ample additional parking is available in the adjacent Coachway Park and ride which is currently free of parking charges. **Competition goers should avoid using the Waitrose car park.**

**Note a 20mph speed limit applies outside the centre.**

**PARKING ENFORCEMENT IS NOW IN PLACE USE THE DESIGNATED CAR PARKS.**



### Access

Please respect the other clubs using the facility before the meet sessions start.

### Lockers

All lockers are secured by **Padlock**. Padlocks should be 40mm combination locks with a 6mm diameter shackle and can be purchased at Reception or you can bring your own. The Leisure Centre will be selling padlocks for Swimmers. Due to the limited number of lockers in the changing rooms,

we would ask swimmers, where possible to share lockers, they are reasonably large and have ample room for two swimmers bags.

### Marshalling Area

Marshalling will be in the Sports Hall. Courts A3 and A4 will be available for Land work and marshalling. Courts A2 will have additional seating. Parents are not allowed in the sports hall beyond the sign in desk.

### Sign In

We operate a sign in procedure at our meets to ensure the meet length is minimised. Please ensure you sign in for each session before warm up. Sign in will be located inside court A1.

**Swimmers who fail to sign in will be removed from the event and may be unable to swim.**

### Changing Village

Changing rooms are on the left after the turnstiles. There are limited numbers of changing rooms so swimmers should pass quickly through the changing facility to poolside. Please remove dirty outdoor shoes or use the overshoes provided before proceeding through the facility to change.

Swimmers please note that you should use any changing rooms as a temporary changing facility and not leave bags and clothes in any changing room.

Only authorised volunteers, officials, team managers, coaches and swimmers will be permitted entry into the changing rooms.

**Please note in order to maintain safe access no large bags may be brought poolside, only small drawstring type bags will be permitted.**

### Spectators

Due to our prioritisation of swimmers over spectator space, it is unlikely there will be enough space for everyone to stay and watch the whole event and we would encourage you to try to vacate seats if you don't have a swimmer swimming.

You may not reserve seats or occupy them with bags or coats

You must not block fire exits or access ways Swimmers will only be allowed in seats if allocated by the organisers.

Please note that spectators **may not bring** their own chairs and should use the seating provided, all walkways must be kept clear.

Designated wheelchair spaces must be vacated for those with additional needs

We suggest where possible you forgo the delights and warmth of the balcony culture and consider leaving your swimmers under the supervision of your Team managers. You can enjoy the retail and Cafe facilities of Waitrose (adjacent), John Lewis and Next (Cressex) and the Eden Centre (Via the free Park and Ride bus) or you can travel the short distance to Marlow High Street and the River Thames.

All seats can see the scoreboard and the pool.

Access to the spectator area is through the turnstiles and upstairs.

### Water

Drinking water will be available from dispenser by the Sauna. Please note refreshments in this area are for badge holders only.

## Food Facilities

Wycombe Leisure Centre has a small cafe, offering sandwiches and hot drinks, however note that there is not the facility for full catering.

Waitrose, located adjacent to the leisure centre is also open and has a cafe. Vending machines are available in the centre for all things swimmers probably should not eat or drink.

## Important Information for Coaches and Team Managers

### Poolside Passes

We will be using new Poolside passes for this meet. This should be visibly at all times or you may be challenged. Please return the lanyard and pass holder at the end of the meet. A box will be available by security.

### Emergency Procedures

The signal in the event of an emergency evacuation will be a continuous alarm followed by a spoken announcement. Procedure for Swimmers poolside will be directed by the centre staff, swimmers will be lined up by the exits and evacuated in a controlled manner when necessary. Please ensure swimmers follow the instructions and do not return to the changing rooms.

The marshalling point is in front of the leisure centre car park.

Team Managers should check their teams are present and report to the Fire Marshalls when requested. Do not return to the building until the staff tell you it is safe to do so.

### The Pool

We will be using the Competition Pool in Long Course configuration. The pool depth is a constant 2m and starting blocks are 75cm above the water.

Teams are requested to leave space for officials to walk up and down poolside. The AOE will be used during this event, with timing pads at both ends. All races finish at the banner end of the pool. 50m starts will be from the swim down pool end. Blocks are Omega Wedge blocks with backstroke ledges used for this meet.

Over the top starts will be used – please ensure swimmers are aware of the need to exit the pool promptly when told. Swimmers should not climb out of the pool over the timing pads.

### Swim Down

The swim down facility will be available during the meet in the community pool. The pool is 20m long 4 lanes wide 1.2m deep. **IT IS NOT SUITABLE FOR DIVING.**

Please ensure swimmers use the swim down facilities for continuous swimming only.

### Seating

Bench seating for swimmers is available spectator side and ledges on the widow side, please follow any space allocations provided. The area nearest the pool ends may be reserved for the officials. Additional seating will be available in the sports hall for swimmers.

### Reserves

A reserve process will be in place to allow as many swimmers as possible to swim. Please ensure all swimmers are aware of this process as documented on the website.